



Reception

The opening reception will be held on Friday,
October 21, 7 to 9 p.m.

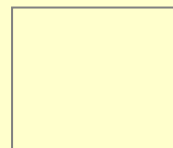
Exhibit Hours

Saturday, October 22nd 10 to 2 p.m.
&
6 to 8pm
Sunday, October 23rd 1 to 4 p.m.



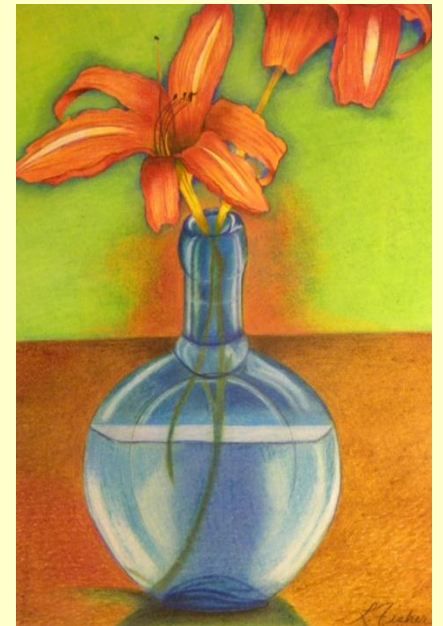
Watermarke
113 S. Spring St.
Suite 2
Bellefonte, Pa. 16823

[CUSTOMER NAME]
[STREET ADDRESS]
[ADDRESS 2]
[CITY, ST ZIP CODE]



WATERMARKE COMMUNITY ART SHOW

October 21-23, 2011



*~ Featuring artists from
Bellefonte and surrounding areas.*

Watermarke
Outreach Centre
114 S. Spring St.
Bellefonte, Pa. 16823



2011 Community Art Show Entry Form

Must be received by Wednesday, October 12, 2011. Mail entry form to Watermarke, 113 S. Spring St., Suite 2, Bellefonte, Pa. 16823

Name	Phone	E-mail
------	-------	--------

Title 1	Circle one: wall/table/floor	Approximate Size
---------	------------------------------	------------------

Medium	Price/NFS
--------	-----------

Title 2	Circle one: wall/table/floor	Approximate Size
---------	------------------------------	------------------

Medium	Price/NFS
--------	-----------

Attach to Entry 1

Attach to Entry 2

Artist

Artist

Title	Price
-------	-------

Title	Price
-------	-------

Medium

Medium

Entry Process

Participants must submit an entry form to Watermarke, 113 S. Spring St, Bellefonte, PA. 16823 **on or before Wednesday, October 12, 2011.** All participants must be 16 years of age or older. Each entry requires information tag. Information tags are provided below entry form. Limit of two entries per artist.

Receiving and Pick-up

Works must be delivered Friday, October 14th from 5 to 7 p.m. or Saturday, October 15th from 11 to 1 p.m. at Watermarke Outreach Centre, 114 S. Spring St, Bellefonte. All entries must be pre-registered. **No on-site entries.** Other times are available by appointment: please call 355-2884.

Pick-up will be Monday, October 24th from 5 to 7 p.m. Entries may not be removed until the show closes.

Disclaimer

All reasonable care will be taken of entries but Watermarke is not responsible for loss or damage. Submission of work implies acceptance of these terms.